

US ARMY CORPS OF ENGINEERS  
NEW YORK DISTRICT

REVISIONS	
NO.	DESCRIPTION

DATE OF SURVEY:  
27 JUNE 2019  
11:12:18  
JULY 2019

SCALE:  
ONE INCH = 100 FEET  
FIELD BOOKS:  
1040

APPROVED: L. GEORGE  
APPROVED: M. EDITE  
APPROVED: D. CLARKE  
APPROVED: J. WRAZ  
DATE: 25 JULY 2019

DEPARTMENT OF THE ARMY  
CORPS OF ENGINEERS  
NEW YORK, NEW YORK 10278  
OPERATIONS DIVISION  
SURVEYING SECTION  
CERNAN-OP-S

MATANAW CREEK  
KEYPORT, NEW JERSEY  
CONDITION SURVEY

VH-101  
SHEET 1 OF 3

LOCAL CONTROL DATA	
BENCHMARK: WALNUT (PID: KV0757)	
ELEVATION: 7.69' (NAVD 1988)	

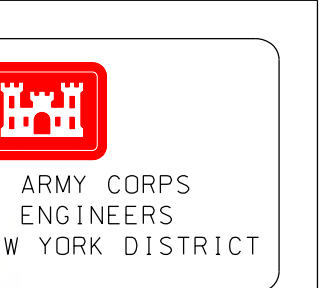
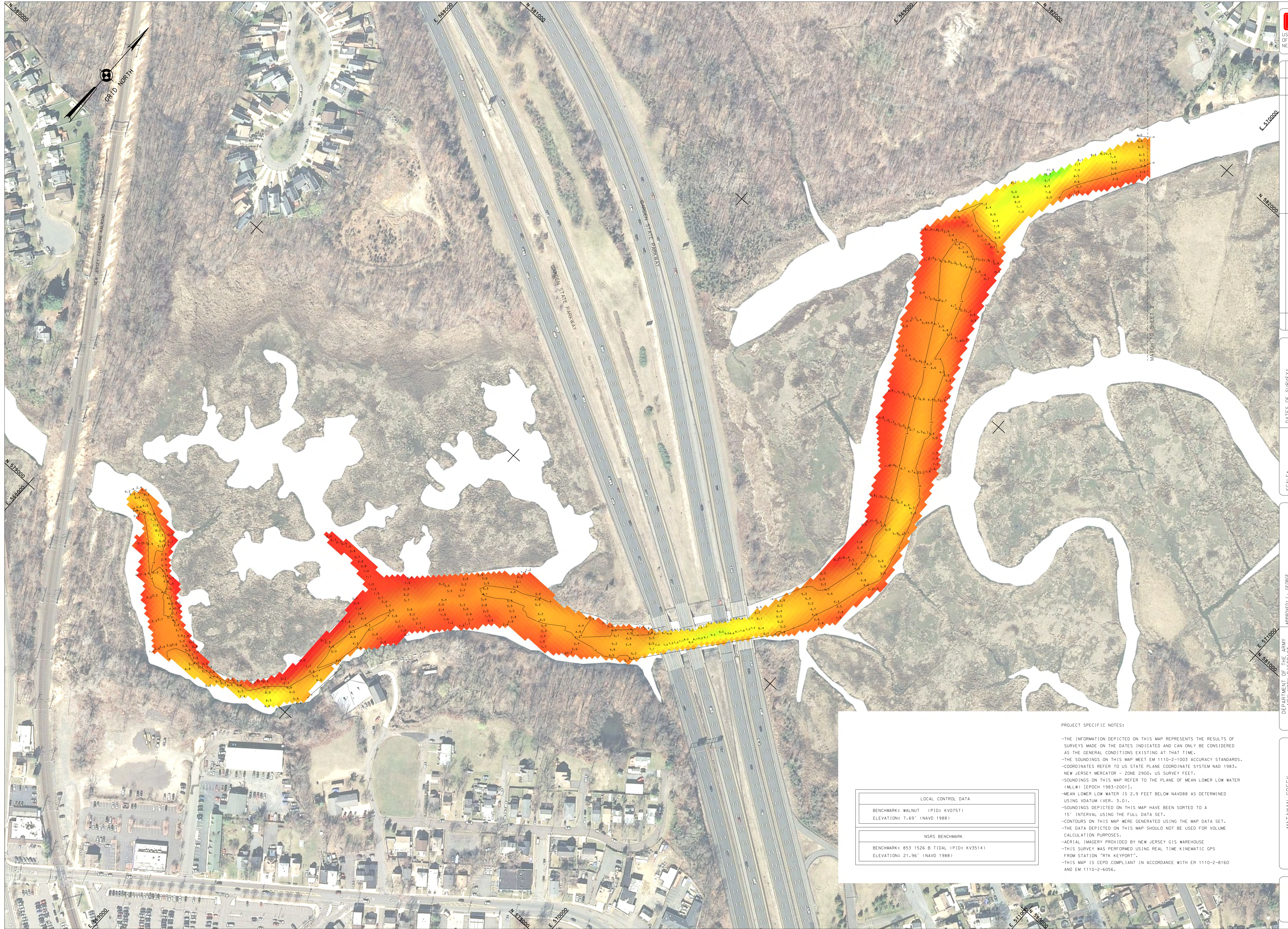
NSRS BENCHMARK	
BENCHMARK: 853 1526 B TIDAL (PID: KV3514)	
ELEVATION: 21.96' (NAVD 1988)	

- PROJECT SPECIFIC NOTES:
- THE INFORMATION DEPICTED ON THIS MAP REPRESENTS THE RESULTS OF SURVEYS MADE ON THE DATES INDICATED AND CAN ONLY BE CONSIDERED AS THE GENERAL CONDITIONS EXISTING AT THAT TIME.
  - THE SOUNDINGS ON THIS MAP MEET EM 1110-2-1003 ACCURACY STANDARDS. COORDINATES REFER TO US STATE PLANE COORDINATE SYSTEM NAD 1983, NEW JERSEY MERCATOR - ZONE 2900, US SURVEY FEET.
  - SOUNDINGS ON THIS MAP REFER TO THE PLANE OF MEAN LOWER LOW WATER (MLLW) [EPOCH 1983-2001].
  - MEAN LOWER LOW WATER IS 2.9 FEET BELOW NAVD88 AS DETERMINED USING VDATUM 1VER, 3, 01.
  - SOUNDINGS DEPICTED ON THIS MAP HAVE BEEN SORTED TO A 15' INTERVAL USING THE FULL DATA SET.
  - CONTOURS ON THIS MAP WERE GENERATED USING THE MAP DATA SET. THE DATA DEPICTED ON THIS MAP SHOULD NOT BE USED FOR VOLUME CALCULATION PURPOSES.
  - AERIAL IMAGERY PROVIDED BY NEW JERSEY GIS WAREHOUSE.
  - THIS SURVEY WAS PERFORMED USING REAL TIME KINEMATIC GPS FROM STATION 9TH KEYPORT.
  - THIS MAP IS CEPD COMPLIANT IN ACCORDANCE WITH ER 1110-2-8160 AND EM 1110-2-6056.

NORTH LIMIT OF 4' PROJECT OF MATANAW CREEK CHANNEL  
SOUTH LIMIT OF 8' PROJECT OF KEYPORT HARBOR CHANNEL

RED 12 BUOY  
FLOOD  
27 JUNE 2019





DATE OF SURVEY:	27 JUNE 11 12 18 JULY 2019
SCALE:	ONE INCH = 100 FEET
FIELD BOOKS:	1040
PROJECT NO.:	4851/A
DATE:	25 JUL 2019

APPROVED: L. GEORGE  
 APPROVED: M. EDGIE  
 APPROVED: J. BRAZ

DEPARTMENT OF THE ARMY  
 CORPS OF ENGINEERS  
 NEW YORK, NEW YORK 10278

OPERATIONS DIVISION  
 NEW YORK DISTRICT

MATAWAN CREEK  
 KEYPORT, NEW JERSEY  
 CONDITION SURVEY

VH-103  
 SHEET 3 OF 3

REQUEST NO.: 4851/A

LOCAL CONTROL DATA	
BENCHMARK:	WALNUT (PID: KV0757)
ELEVATION:	7.69' (NAVD 1988)
NSRS BENCHMARK	
BENCHMARK:	853 1526 B TIDAL (PID: KV3514)
ELEVATION:	21.96' (NAVD 1988)

PROJECT SPECIFIC NOTES:

- THE INFORMATION DEPICTED ON THIS MAP REPRESENTS THE RESULTS OF SURVEYS MADE ON THE DATES INDICATED AND CAN ONLY BE CONSIDERED AS THE GENERAL CONDITIONS EXISTING AT THAT TIME.
- THE SOUNDINGS ON THIS MAP MEET EM 1110-2-1003 ACCURACY STANDARDS.
- COORDINATES REFER TO US STATE PLANE COORDINATE SYSTEM NAD 1983, NEW JERSEY MERCATOR - ZONE 2900, US SURVEY FEET.
- SOUNDINGS ON THIS MAP REFER TO THE PLANE OF MEAN LOWER LOW WATER (MLLW) [EPOCH 1983-2001].
- MEAN LOWER LOW WATER IS 2.9 FEET BELOW NAVD88 AS DETERMINED USING VDATUM (VER. 3.0).
- SOUNDINGS DEPICTED ON THIS MAP HAVE BEEN SORTED TO A 15' INTERVAL USING THE FULL DATA SET.
- CONTOURS ON THIS MAP WERE GENERATED USING THE MAP DATA SET.
- THE DATA DEPICTED ON THIS MAP SHOULD NOT BE USED FOR VOLUME CALCULATION PURPOSES.
- AERIAL IMAGERY PROVIDED BY NEW JERSEY GIS WAREHOUSE
- THIS SURVEY WAS PERFORMED USING REAL TIME KINEMATIC GPS FROM STATION "TK KEYPORT".
- THIS MAP IS CEP COMPLIANT IN ACCORDANCE WITH ER 1110-2-8160 AND EM 1110-2-6056.

MATCH TO SHEET 2